

DNP	BG	USA	ISO	øT	CH2	CH3	øE	L1	L2	L3	F	COD. (F)	COD. (M)
10	2	06	10	06L	22	22	31	94	65	47	M 12x1.5	PPV3.1012.302	PPV3.1012.303
				08L	22	22	31	94	65	47	M 14x1.5	PPV3.1014.302	PPV3.1014.303
				10L	22	22	31	96	66	48	M 16x1.5	PPV3.1016.302	PPV3.1016.303
				12L	22	22	31	96	66	48	M 18x1.5	PPV3.1018.302	PPV3.1018.303
13	3	08	12.5	08L	30	30	38	103	69	56	M 14x1.5	PPV3.1314.302	PPV3.1314.303
				10L	30	30	38	105	70	57	M 16x1.5	PPV3.1316.302	PPV3.1316.303
				12L	30	30	38	105	70	57	M 18x1.5	PPV3.1318.302	PPV3.1318.303
				15L	30	30	38	107	71	58	M 22x1.5	PPV3.1322.302	PPV3.1322.303
20	4	12	20	12L	36	36	46	126	90.3	63	M 18x1.5	PPV3.2018.302	PPV3.2018.303
				15L	36	36	46	128	91.3	64	M 22x1.5	PPV3.2022.302	PPV3.2022.303
				18L	36	36	46	128	91.3	64	M 26x1.5	PPV3.2026.302	PPV3.2026.303
				22L	36	36	46	132	93.3	66	M 30x2	PPV3.2030.302	PPV3.2030.303
25	5	16	25	18L	41	41	54	128	92.5	69	M 26x1.5	PPV3.2526.302	PPV3.2526.303
				22L	41	41	54	132	94.5	71	M 30x2	PPV3.2530.302	PPV3.2530.303
				28L	41	41	54	132	94.5	71	M 36x2	PPV3.2536.302	PPV3.2536.303
				35L	46	46	54	136	96.5	73	M 45x2	PPV3.2545.302	PPV3.2545.303
10	2	06	10	08S	22	22	31	98	67	49	M 16x1.5	PPV3.1016.402	PPV3.1016.403
				10S	22	22	31	98	67	49	M 18x1.5	PPV3.1018.402	PPV3.1018.403
				12S	22	22	31	98	67	49	M 20x1.5	PPV3.1020.402	PPV3.1020.403
13	3	08	12.5	10S	30	30	38	107	71	58	M 18x1.5	PPV3.1318.402	PPV3.1318.403
				12S	30	30	38	107	71	58	M 20x1.5	PPV3.1320.402	PPV3.1320.403
				14S	30	30	38	111	73	60	M 22x1.5	PPV3.1322.402	PPV3.1322.403
				16S	30	30	38	111	73	60	M 24x1.5	PPV3.1324.402	PPV3.1324.403
				20S	30	30	38	115	75	62	M 30x2	PPV3.1330.402	PPV3.1330.403
20	4	12	20	10S	36	36	46	128	91.3	64	M 18x1.5	PPV3.2018.402	PPV3.2018.403
				12S	36	36	46	128	91.3	64	M 20x1.5	PPV3.2020.402	PPV3.2020.403
				14S	36	36	46	132	93.3	66	M 22x1.5	PPV3.2022.402	PPV3.2022.403
				16S	36	36	46	132	93.3	66	M 24x1.5	PPV3.2024.402	PPV3.2024.403
				20S	36	36	46	136	95.3	68	M 30x2	PPV3.2030.402	PPV3.2030.403
25	5	16	25	20S	41	41	54	136	96.5	73	M 30x2	PPV3.2530.402	PPV3.2530.403
				25S	41	41	54	140	98.5	75	M 36x2	PPV3.2536.402	PPV3.2536.403
				30S	46	46	54	144	100.5	77	M 42x2	PPV3.2542.402	PPV3.2542.403

**CARATTERISTICHE TECNICHE**

**Materiali:** acciaio zincato e passivato giallo con parti sollecitate carbonitrate o temprate ad induzione. 12 sfere radiali di aggancio UNI 100CR6. **Guarnizioni:** in gomma nitrilica NBR. Altre qualità a richiesta. **Temperatura di esercizio:** con guarnizioni standard - 25°C + 125°C. **Antiestrusori:** in Teflon puro. **Filettature:** metriche esterne secondo la norma DIN 2353 L (leggera) o S (pesante). Altre filettature a richiesta.

**TECHNICAL INFORMATION**

**Materials:** zinc-plated and yellow bichromated steel with all high stressed components carbonitrided or hardened by induction. Locking is provided by 12 balls UNI 100CR6. **Seals:** standard in nitrile NBR. Other seals on request. **Working temperatures:** with NBR standard seals - 25°C + 125°C **Back-up ring:** in pure Teflon **Threads:** outside metric according to DIN 2353 L (light) or S (heavy). Other threads on request.

**TECHNISCHE MERKAMALE**

**Werkstoff:** verzinkter und gelb chromatierter Stahl mit allen verschleissbeanspruchten Komponenten carbonitriert oder induktivgehärtet. 12 Verriegelungskugeln UNI 100CR6. **Dichtungen:** aus Nitril NBR lieferbar. Andere Dichtungen auf Anfrage ebenfalls lieferbar. **Betriebstemperatur:** mit NBR Standard-Dichtung - 25°C + 125°C. **Stuetzring:** aus rein Teflon **Gewinde:** metrische Aussengewinde nach DIN 2353 L (leichter Baureihe) oder S (schwerer Baureihe). Andere Gewinde auf Wunsch ebenfalls lieferbar.

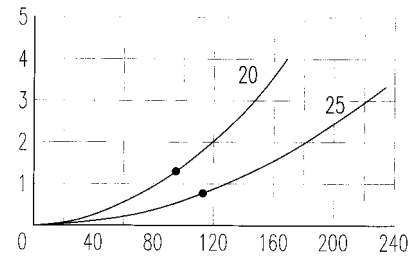
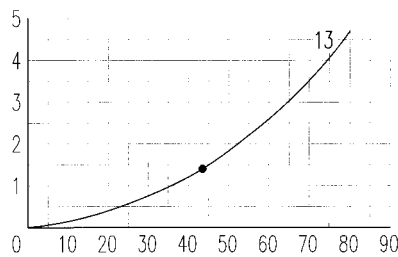
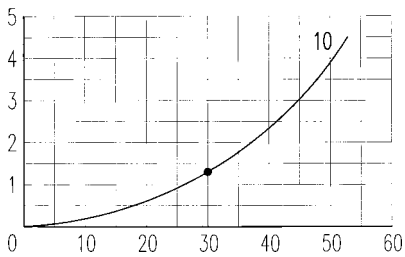
**CARACTERISTIQUES TECHNIQUES**

**Matériel:** acier zingué et bichromaté jaune avec les composants soumis à sollicitation carbonitrurés ou trempés à induction. 12 billes de verrouillage UNI 100CR6. **Joints:** nitrile NBR en standard. Autres qualités sur demande. **Température de service:** avec joints standard - 25°C + 125°C. **Bague anti-extrusion:** en Teflon pur. **Taraudages:** métriques externes selon DIN 2353 L (série légère) ou S (série lourde). Autres taraudages sur demande.

Dimensione nominale Nominal size Nennmass Dimension nominale				Press. max d'esercizio Max working pressure Max Betriebsdruck Press. de service max	Portata nominale Rated flow Durchfluss Débit	Pressione min di scoppio / Min burst pressure Min Berstdruck / Pression d'éclatement min			Spillaggio / Fluid spillage Överlust / Ecoulement			
DNP	BG	USA	ISO			DN (mm)	(bar)	(l/m)		Maschio / Male Stecker / Måle	Femmina / Female Muffe / Femelle	Innestato / Coupled Gekuppelt / Accouplé
10	2	06	10	9	270	30	1060	1980	1100			1.9
13	3	08	12.5	10.6	250	43	1030	1580	1120			2.7
20	4	12	20	15.7	225	93	900	1000	940			9.3
25	5	16	25	17.3	225	113	940	1100	970			16

PERDITA DI CARICO / PRESSURE DROP / DRUCKVERLUST / DEBIT DE PRESSION ( $\Delta p$  bar - l/m)

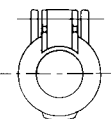
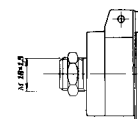
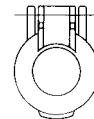
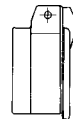
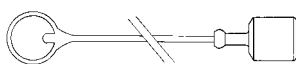
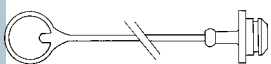
$\Delta p$  (bar)



l/m

ACCESSORI / ACCESSORIES / ZUBEHÖR / ACCESSOIRES

DNP size	Tappo per femmina Female dust plug Staubstecker Bouchon pour fem.	Cappuccio per masc. Male dust cap Staubkappe Capuchon pour mâle	Colore Colour Farbe Couleur	Materiale Material Werkstoff Matériel	DNP size	Protezione per fem. Automatic fem. caps Klappdeckel für Muffe Protection pour fem.	Supporto per maschio Automatic male caps Steckerhalter Protection pour mâle	Colore Colour Farbe Couleur	Materiale Material Werkstoff Matériel
10	SPAV.10002	SPAV.10003	ROSSO / RED	POLYETHYLENE	13	SPPV.13302	SPPV.13303	NERO / BLACK	NYLON
13	SPAV.13002	SPAV.13003	ROSSO / RED	PVC	13	SPPV.13312		GIALLO / YELLOW	NYLON
13	SPAV.13012	SPAV.13013	GIALLO / YELLOW	PVC	13	SPPV.13322		VERDE / GREEN	NYLON
13	SPAV.13022	SPAV.13023	VERDE / GREEN	PVC	13	SPPV.13332		BLU / BLUE	NYLON
13	SPAV.13032	SPAV.13033	BLU / BLUE	PVC	13	SPPV.13342		ROSSO / RED	NYLON
13	SPAV.13042	SPAV.13043	NERO/BLACK	PVC					
20	SPAV.20002	SPAV.20003	ROSSO / RED	PVC					
25	SPAV.25002	SPAV.25003	ROSSO / RED	POLYETHYLENE					



GUARNIZIONI DI RICAMBIO / SPARE PARTS / ERSATZDICHTUNGEN / JOINTS

DNP size	O-RING FEMMINA / FEMALE O-RING MUFFE O-RING / O-RING FEMELLE	DNP size	ANTIESTRUSORE FEMMINA / FEMALE BACK-UP RING MUFFE STÜTZRING / CONTRE-JOINT FEMELLE
10	PPV.010.120 NBR	10	PPV.010.130 PTFE
13	PPV.013.120	13	PPV.013.130
20	PAV.019.120	20	PAV.019.130
25	PAV.025.120	25	PAV.025.130