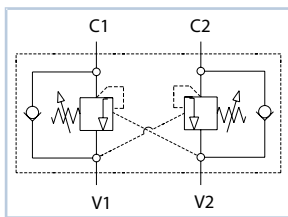
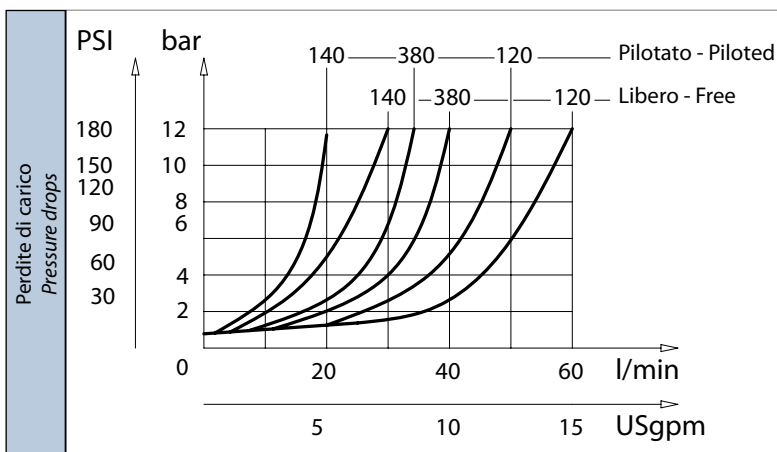
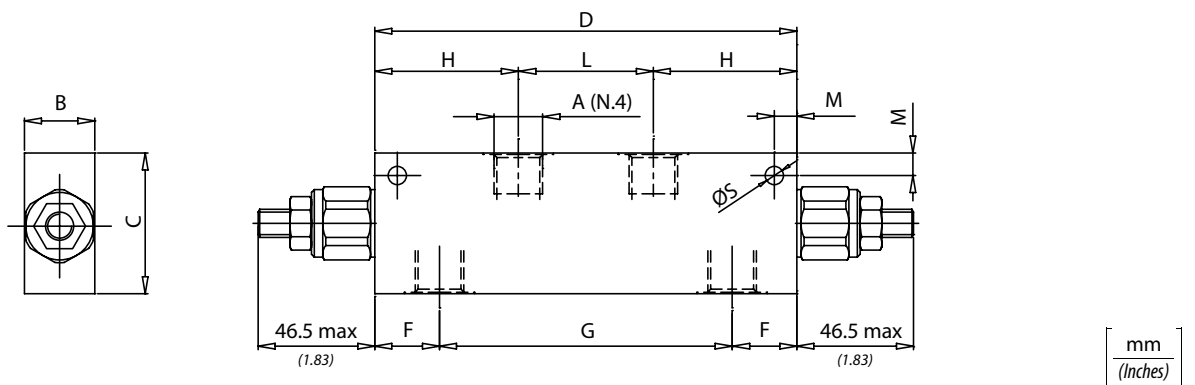
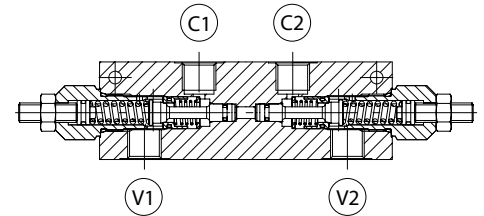


# REROSA-HYDRAULIKA, s.r.o.

Typ/Type  
VBCD



Dati tecnici Technical data	
Viscosità fluido Fluid viscosity	10-500 mm <sup>2</sup> /s 45 to 2000 ssu (6 to 420 cSt)
Classe di contaminazione Filtration	ISO code 16/13 SAE class 4 or better
Temperatura fluido Fluid temperature	-20°C +80°C -4°F +176°F
Temperatura ambiente Ambient temperature	-20°C +50°C -4°F +122°F
Settaggio valvola di massima: almeno 1,3 volte il carico più alto usato. Relief valve setting: at least 1.3 times the highest expected load.	



Codice ordinazione Ordering code					
VBCD - X - Y - K - Z					
X	Dimensione / Size	K	Materiale / Material	Z	Optional
140	BSPP 1/4	S	Corpo in acciaio (Steel body)	S	
380	BSPP 3/8				
120	BSPP 1/2				
Y	Molla - Spring	Incremento pressione al giro Press. increase	Taratura standard Std. setting (Q=5 l/min)		
1	30/210 bar (400/3000 PSI)	70 bar/turn (1000 PSI/turn)	200 bar (2900 PSI)		
2	60/350 bar (850/3500 PSI)	120 bar/turn (1700 PSI/turn)	350 bar (5000 PSI)		

Caratteristiche tecniche Technical performances											Peso approssimativo Approx weight Kg / lb	Rapporto di pilotaggio Pilot ratio		
Codice Code	A	Portata Max Max flow l/min - USgpm	Pressione Max Max pressure bar/PSI	B	C	D	F	G	H	L			M	S
VBCD140	BSPP 1/4	30 (8)	350 (5000)	25 (0.98)	50 (1.97)	150 (5.90)	23 (0.90)	104 (4.09)	51 (2)	48 (1.89)	8 (0.32)	6,5 (0.26)	1,5 (3.3)	1:4.25
VBCD380	BSPP 3/8	40 (10.5)		30 (1.18)	60 (2.36)		21 (0.83)	108 (4.25)					2 (4.4)	
VBCD120	BSPP 1/2	60 (16)												