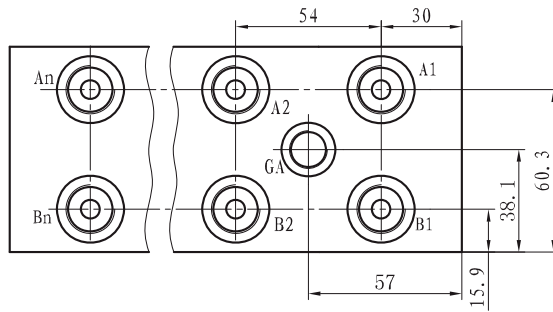
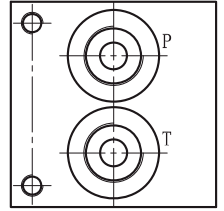
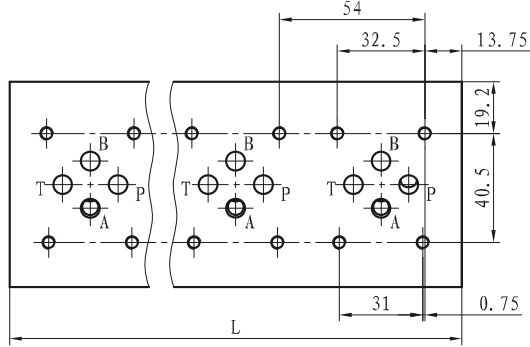
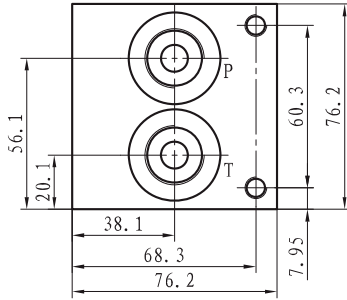
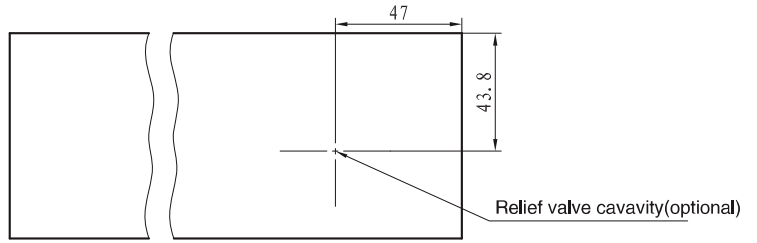
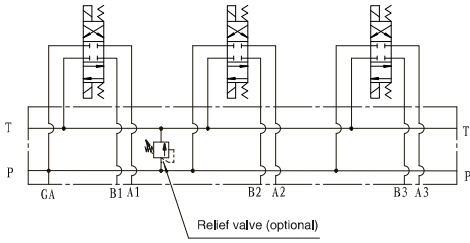


# AL-BL-6

Manifold

I O W  
AmberLine  
Hydraulics



**AL - BL - 6 - A - 1 - M - C**

NG6 manifold

A=Aluminum max pressure 20.7MPa  
S=Steel max pressure 31.5MPa

Stations number  
1-2-3-4-5-6-7-8-9-10

No code=Without cavity of relief valve  
C= With cavity of relief valve 10-2

Thread type		P.T	A.B	GA
P	NPT(Z)	NPT1/2	NPT3/8	NPT1/4
S	SAE	SAE10	SAE8	SAE6
No code	BSP(G)	BSP1/2	BSP3/8	/
M	M	M22X1.5	M18X1.5	/

Stations number	1	2	3	4	5	6	7	8	9	10	11	12	13	14	15	16
L(mm)	60	114	168	222	276	330	384	438	492	546	600	654	708	762	816	870

Attention: The length of 1 station manifold with relief valve is 79.22mm, 1 station manifold without oil port for pressure gauge.